

STANDARD SPECIFICATIONS

MODEL CF10

MODEL CF14

MODEL CF16

BODY LENGTH CF10 - 10'; CF14 - 14'; CF16 - 16'.

OVERALL WIDTH 8 feet.

INSIDE HEIGHT 83". **OUTSIDE HEIGHT** 96".

AXLES Heavy-duty commercial quality; CF10 - one 3,500 pound capacity; CF14/CF16 - two 3,500 pound capacity.

SUSPENSION CF10 - single 4-leaf springs. CF14/CF16 - tandem 4-leaf springs.

WHEELS 15" by 6" one-piece 5 hole with 4-1/2" bolt circle.

TIRES P225/75R 15" radial whitewalls.

BRAKES Electric drum type on all wheels; 12 volt, 10" by 2-1/4", with breakaway switch wired in. (require tow vehicle controller - *not* supplied with trailer).

FRONT JACK 5,000 pound sidewind type recessed in front bumper, with sand flange.

REAR JACKS Two fold-up stabilizing jacks mounted to frame under floor.

COUNTERTOPS 16" wide painted steel across both sides and rear of trailer; CF10 - 25' total length; CF14 - 33' total length; CF16 - 37' total length. (*Width modified for factory-installed options.*)

COUNTER HEIGHT 34" inside, 47" outside.

OVERHEAD SHELVES 9" wide located above both side serving windows; CF10 - 20' total length; CF14 - 28' total length; CF16 - 32' total length.

LIGHTS/BRAKES RECEPTACLE 6-watt 12 volt.

G.V.W.R. CF10 - 3,600 pounds; CF14/CF16 - 5,000 pounds.*

SCALE WEIGHT CF10 - 2,580 pounds; CF14 - 3,450 pounds; CF16 - 3,950 pounds.

TONGUE WEIGHT CF10 - maximum 360 pounds; CF14/CF16 - maximum 720 pounds.

PAYLOAD CAPACITY CF10 - max. 1,020 pounds; CF14 - max. 1,550 pounds; CF16 - max. 1,050 pounds.**

HITCH HEIGHT Approximately 18.5" to top of ball (varies with amount of load).

FRAME Heavy-duty all welded tubular steel.

BODY CONSTRUCTION Welded 14 gauge formed steel with integral counters.

ROOF Welded 14 gauge formed steel, crossbroke, reinforced and silicone sealed, with mansard style and awnings to shed water.

SERVING WINDOWS CF10/CF14 - two 38" by 112" (sides); CF16 - four 38" by 90" (sides); CF10/CF14/CF16 - one 38" by 82" (rear); all window awnings 16 gauge steel with outward crossbreak.

AWNING SUPPORTS 3/4" steel rod with rubber tips to protect finish.

ENTRANCE DOOR One 25" by 70" with outward crossbreak and chrome "T" handle with lock and key.

FLOOR 1/8" steel safety treadplate with drop construction for low 13" inside floor height.

HITCH Forged steel 2" ball coupler with positive lock collar & pin. (CF16 usually requires/includes 2-5/16" coupler).

TONGUE 3" square tube steel, removable by pulling one hitch pin.

LIGHTS Sealed beam type, wiring run through frame for protection; meet DOT/ICC requirements.

PAINT Two coats of white enamel over rust-inhibitive primer.

TRIM Chrome hub caps with chrome wheel well edge guard.

INSIDE LIGHTING One 120 volt fluorescent fixture with two dual pin 40 watt, 48" fluorescent bulbs, mounted above entrance door and controlled by wall-mounted switch. CF16 contains additional rear fixture.

INSIDE ELECTRICAL Two three-prong 15 amp, 120 volt duplex receptacles connected via 15 amp male motor base plug mounted on outside, with load center and 15 amp breaker; all components *UL Listed* and installed in accordance with the National Electrical Code.

CLEANUP All-metal construction with two drainholes in rear of trailer provides for quick and easy washout.

* With standard 2" ball coupler. Optional 2-5/16" ball coupler increases G.V.W.R. to 7,200 pounds.

** With standard 2" ball coupler. Optional 2-5/16" ball coupler increases payload capacity to 3,750 pounds for the CF14 and to 3,250 pounds for the CF16.

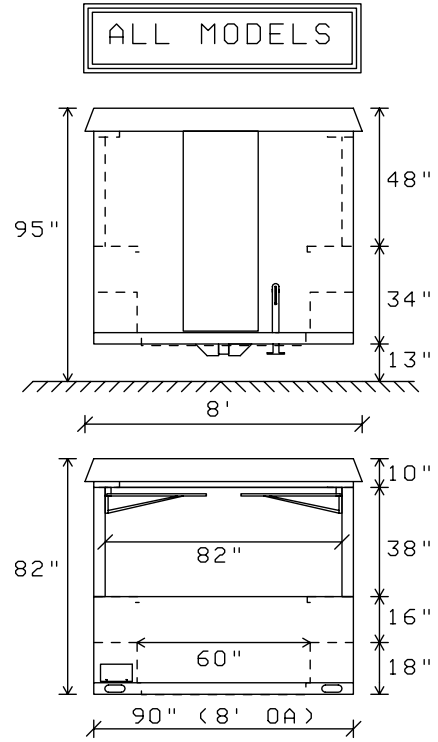
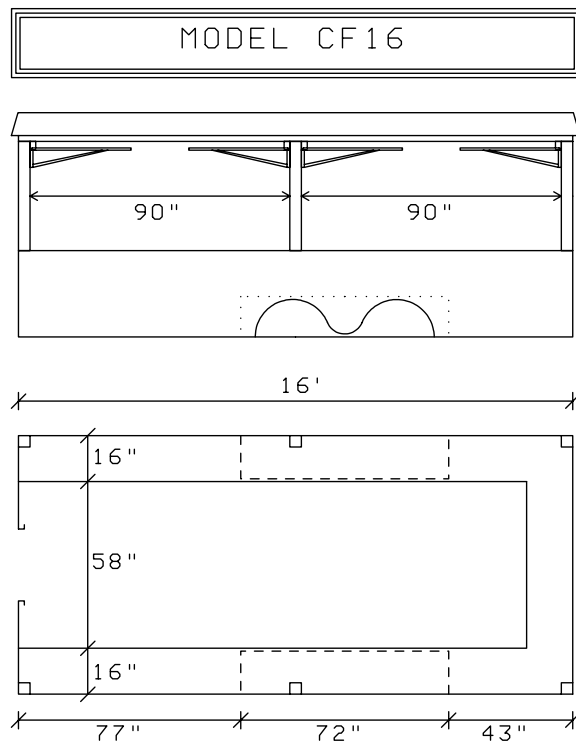
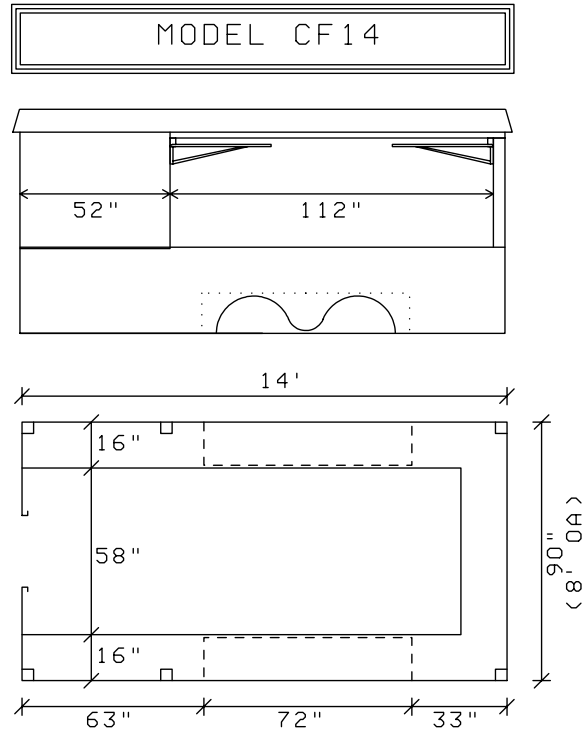
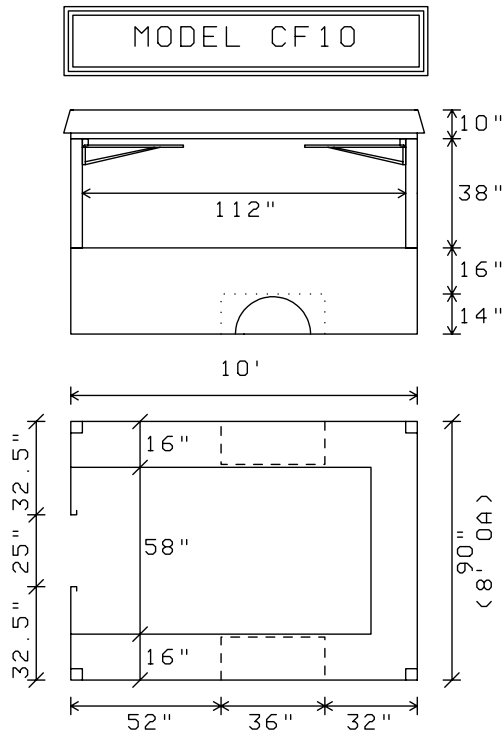
Due to our policy of ongoing improvements, our designs and specifications are subject to change without notice.

DIMENSIONAL DIAGRAMS

MODEL CF10

MODEL CF14

MODEL CF16



Due to our policy of ongoing improvements, our designs and specifications are subject to change without notice.